



Easington Church of England Primary School

Newsletter Friday 30th September 2022

May we give them the roots to grow and the wings to fly



Wednesday 5th October	Whole School at Church 9:30am – parents welcome (Harvest)
Thursday 6th October	Open Afternoon for prospective parents 2.00-5.30pm
Friday 7th October	Family Friday 9-9.30a.m./Stay and Play Ms Lilley's class Including Christmas Card designs PTA
Thursday 13th October	Y5/6 Collective Worship 9.15am all welcome
Monday 17th October NEW EVENT	Children in Need Rickshaw Challenge passing our school approx. 2.20pm
Wednesday 19th October	Cinema evening 4.45pm- 6:15pm
Friday 21st October NEW TIME	Celebration worship 2.15p.m. parents and families welcome
Friday 21st October	Non-uniform day (in aid of School Fund)
Friday 21st – Sunday 30th October	Autumn Half Term – School Closed
Monday 31st October	School reopens
Thursday 3rd November	Open Afternoon for prospective parents 2.00-5.30pm
Friday 4th November	Family Friday 9-9.30a.m./Stay and Play Ms Lilley's class
Thursday 10th November	Y3/4 Collective Worship 9.15am all welcome
Monday 14th November	Parental Consultation meetings
Tuesday 15th November	Parental Consultation meetings
Wednesday 23rd November	Whole School at Church 9:30am – parents welcome
Thursday 24th November	Phototronics – individual photographs and siblings (including younger siblings who have not yet started school)
Wednesday 30th November	PTA – Bacon/Sausage Butty morning 8.15am
Thursday 1st December	Open Afternoon for prospective parents 2.00-5.30pm
Friday 2nd December	Non-uniform day (donations in aid of Christmas Fair)
Friday 2nd December	Family Friday 9-9.30am/Stay and Play Ms Lilley's class
Thursday 8th December	Save the Children Christmas Jumper Day
Friday 9th December	Christmas Market 3.30pm
Monday 12th December	Reception and Year 1 Nativity - time to be confirmed AM
Tuesday 13th December	Reception and Year 1 Nativity - time to be confirmed PM
Wednesday 14th December	Advent Service St. Mary's 2.15pm. All welcome
Thursday 15th December	Christmas Party/Disco – YR/1/2 4.45-5.45pm Y3/4/5/6 6-7pm
Friday 16th December	Non-uniform day
Friday 16th December	School closes for Christmas break
Friday 16th December – Tuesday 3rd January	Christmas Holidays - School Closed
Wednesday 4th January	School reopens

Stars of the week Friday 30th September 2022

Ms. Lilley's Class – ELM	Benjamin B
Miss Defty's Class – OAK	Taylan D
Miss O'Neil's Class – MAPLE	Freya J
Mr. Churchill's Class– SYCAMORE	Alfie H
Mrs. Appleby's Class - WILLOW	Emmie R
Pupils Pupil	Sophie M / Ellie P
Resilience Award	Grace W
Mr Appleby's Special Book	Cassy K
Staff member of the week	Mrs Bowden-Stoker

Attendance week commencing 26th September 2022

Reception	94.7
Year 1	93.8
Year 2	93.7
Year 3	100
Year 4	93.3
Year 5	98.6
Year 6	93.0

Some exciting news!

Please see below an exciting letter we received to our school this week. We cannot wait to get involved and hope our families will join us on the day. Mary's information letter to parents is attached ☺



Hello,

My name is Mary and I work for BBC Children In Need. This year on our Rickshaw Challenge, we will be passing by your school on Monday 17th October roughly around 14:20pm (but there will be a tracker on our website so you can follow our progress and have a more accurate time estimate).

The Great Rickshaw Relay Challenge will see Matt Baker and five inspirational young people who have benefited from Children In Need funded projects take on a relay-style cycle ride in five chapters across the UK, with each rider taking a leg each, travelling through their hometowns and visiting places, which hold a particular significance for them.

We are hoping to get as many people in local communities across the UK to come out and support the riders on their journey with cheering, waving and banners. This is hugely important to life the spirits of the riders and show community spirit.

Schools across the country come out to cheer, wave, and hold banners up for the rider from their local area. It creates a great atmosphere and gets the children involved in Children In Need.

I have attached a letter with more information that you can pass on to staff and parents. It is important all parents be informed, as we will be filming the riders as they ride by so if there is a child who cannot be on camera they must not take part.

If your school is interested, please do let me know and I can support you in any way you need.

Kind regards,
Mary O'Reilly



Easington Church of England Primary School

Newsletter Friday 30th September 2022

May we give them the roots to grow and the wings to fly

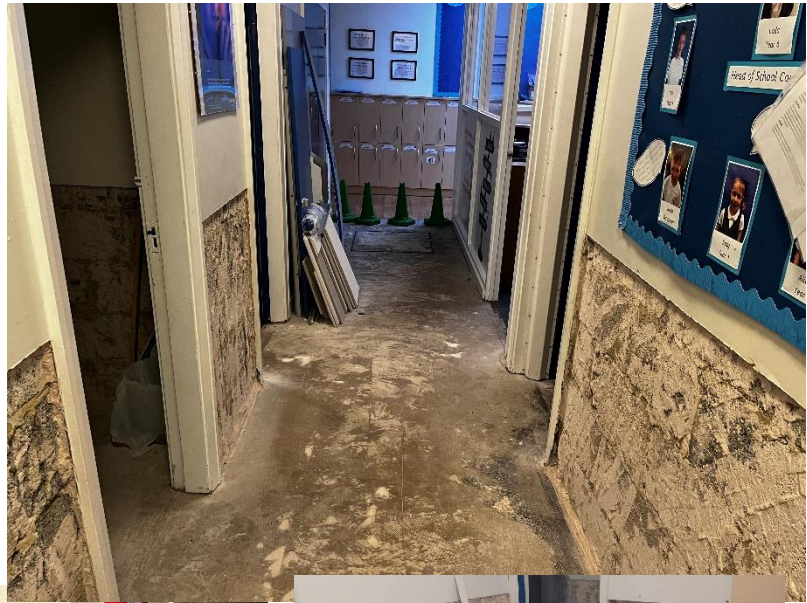


Flood in school

As you are aware, unfortunately we had a flood during the 6 weeks holidays, which caused considerable damage to some parts of our wonderful school (as you can see!). It has been a very challenging time for all staff and children but I am immensely proud of the resilience shown by everyone and the fact that we opened back in September when many schools would have remained closed.

We are hoping all of the repairs will be finished by half term so that when we return on 31st October, we are back to normality and the areas that were affected are back to full working order. We will share photographs once everything is completed.

Thank you.
Mr Appleby



Open Afternoon

Please could we ask you help us to spread the word about our school and our upcoming Open Afternoons. Starting in October, they will take place the first Thursday of every month (Thursday 6th October, Thursday 3rd November and Thursday 1st December). You will find further information below. Please share with friends and families ☺

Open Afternoon

First Thursday of every month beginning in October

Drop in between 2.00-5.30pm



Come and have a look around our wonderful school to see what we offer our children and families.

OUTSTANDING KEY STAGE 2 SATS RESULTS



BBC CHILDREN IN NEED

Dear Easington C of E Primary School,

Children in Need 2022 – The Great Rickshaw Relay Challenge

We are delighted to be passing by Easington C of E Primary on our Rickshaw Challenge route this year! Children in Need would like to invite your school to offer support to our Rickshaw Challengers by waving, and creating banners. Any kind of support would be fantastic! If you need any Children in Need merchandise you can get this from the website. We plan on passing by on **Monday 17th of October roughly around 14:20pm** but there will be a tracker on our website so you can follow our progress and have a more accurate time estimate.

This will also be filmed for a documentary called The Great Rickshaw Relay, which will be on BBC1 on the 15th November at 8pm. You can watch last years to get a feel for the event here: [BBC iPlayer - BBC Children in Need - 2021: The Great Rickshaw Relay Challenge - Signed](#)

The children should be chaperoned at all times by a responsible adult – i.e. Teacher, Teaching Assistants. BBC staff will be present at the event but it is not possible for them to take responsibility for the children or to undertake a caring or supervisory role.

The BBC has a Child Protection Policy and all the staff within the BBC are required to act in accordance with it. The policy can be viewed at https://www.bbc.co.uk/aboutthebbc/insidethebbc/howwework/policiesandguidelines/child_protection.html

In order to facilitate communication, generic BBC contact details will be provided as required. BBC staff are not permitted to share their personal contact details or to ask for the personal or contact details of any child or young person.

Health & Safety

It is a legal requirement that we inform you of any health and safety risks associated with our visit and the arrangements we have made to protect them from these risks.

With all filming, there are potential hazards such as cameras and cables (which will be taped down, matted or laid in safe positions) and other hazards. The teaching staff and children will be advised of these and where the 'safe areas' (areas with less hazards) are.

Any precautions implemented will adhere to the BBC's Health and Safety policy and procedures.

Please could you let us know if your school would like to participate? If so, could you please inform the parents or legal guardians of the children involved about the details of this event and the documentary filming, and if there are any objections from parents, or children who should not be on camera for any reason those children should not come to the event so as not to be caught on camera.

Sincerely,
Mary O'Reilly
Children in Need

BBC Children in Need, Ground Floor Bridge House, MediaCityUK, Salford M50 2BH
+44 (0)345 609 0015 • pudsey@bbc.co.uk • bbc.co.uk/cin



Easington Church of England Primary School

Newsletter Friday 30th September 2022

May we give them the roots to grow and the wings to fly



The children in Years 1 and 2 had a fantastic walk around our beautiful village exploring on Thursday in line with our Geography topic this term.

