



Easington Church of England Primary School

Newsletter Friday 14th January 2022

May we give them the roots to grow and the wings to fly



Dates for your diary :

Friday 28th Jan	PTA Bacon Butty Morning 8.15am School Yard
-----------------------------------	---

PTA Bacon/Sausage Butty Morning

Friday 28th January 2022

The PTA would love families to join us on Friday 28th January, in the School Yard from 8.15am for a butty and a cuppa. It promises to be a lovely morning. Please remember to return your order form by Monday 24th January.

Friday 18th Feb	School Closes for half term break
Monday 28th Feb	School reopens for children

Attendance week commencing 10th January 2022

Ms. Lilley's Class – ELM	100
Miss Defty's Class – OAK	99.3
Miss O'Neil's Class – MAPLE	96.5
Mr. Churchill's Class– SYCAMORE	98.2
Mrs. Appleby's Class - WILLOW	70.0

Star Pupils Friday 7th January 2022

Ms. Lilley's Class – ELM	Betsy F-L
Miss Defty's Class – OAK	Maggie S
Miss O'Neil's Class – MAPLE	Florence M
Mr. Churchill's Class– SYCAMORE	Isla J
Mrs. Appleby's Class - WILLOW	Aaron T
Mr Appleby's Special Book	Joshua P
Resilience Award	Millie W

Welcome back

A warm welcome back to the spring term to all of our children and families. The children all worked exceptionally hard over the Autumn Term and we have been very pleased with their progress.

Our robust recovery curriculum will continue to be implemented, with extra support planned in to support children where this has been identified. We realise that there will be gaps in knowledge for some of the missed periods of schooling over the past two years, and we are working as hard as possible to ensure that these gaps are identified and addressed.

We will continue to review our COVID risk assessments in line with new local and national guidelines and data. Rest assured, the safety of our children and staff will always remain our priority and risks will be managed effectively to keep everyone as safe as possible.

At the beginning of the spring term, the systems and routines we had in place over autumn term will remain, with any changes to this shared with you as soon as possible. Any events we hold will be either outside or virtual. When it is safe to have parent in school, we will.

I would like to thank you all for your continued understanding, support and co-operation in these very challenging and uncertain times.

Stay safe

Mr Appleby



Fundraise & Recycle Ltd – School Connect

Thank you to those families who have dropped items into the recycling container. Fundraise and Recycle are hoping to visit school for a collection on 24th January.



Cupcake Tuesday

Starting next Tuesday 18th January the PTA would like to re-introduce Cupcake Tuesday. Children can bring 50p to school to purchase a cupcake at morning break.

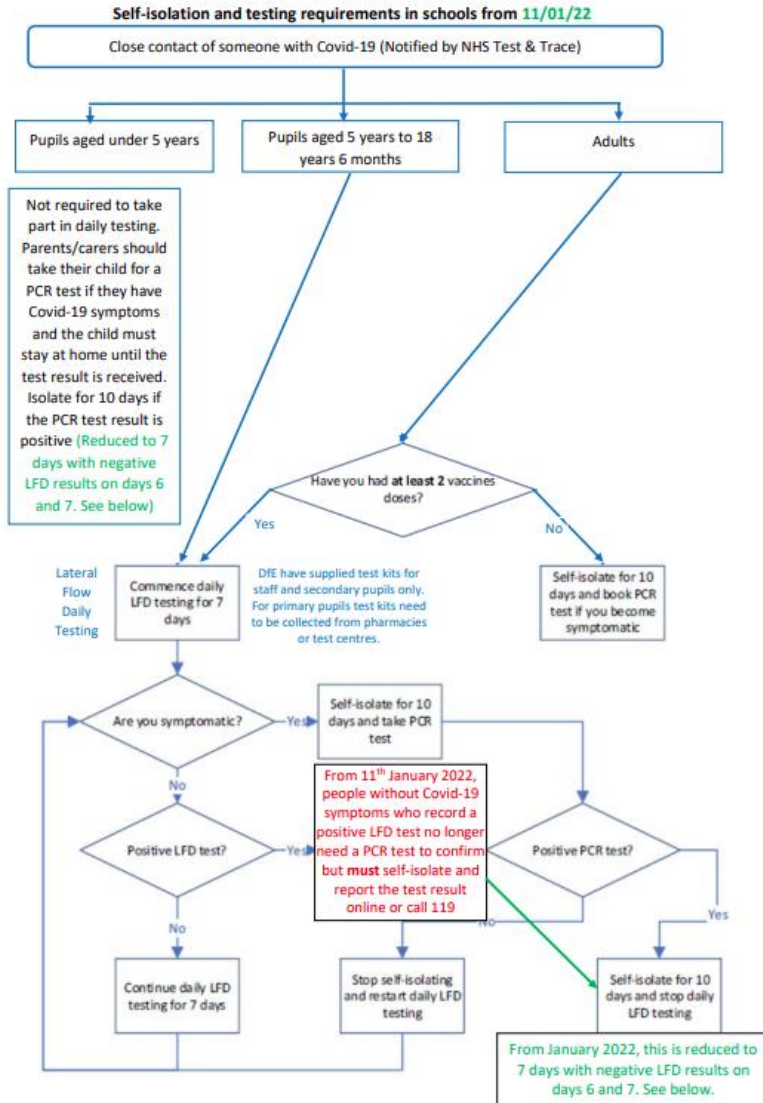




May we give them the roots to grow and the wings to fly

COVID cases

Unfortunately, we have had a COVID outbreak in our Year 6 class this week, with five children testing positive. Year 6 are currently in a bubble and not mixing with other children in school. Risk assessments and up to date guidance have been followed and the Local Health Protection Team have been notified.



Ending self-isolation early using LFD tests

UK Health Security Agency

New 7 day self-isolation rules

The self-isolation period for people who have tested positive for COVID-19 has been reduced in most cases

- 1.** If you test positive for COVID-19 you must self-isolate for up to 10 days
- 2.** Take an LFD on day 6 of your isolation and another 24 hours later on day 7
- 3.** If both tests are negative and you have no symptoms, you may end your self-isolation after the second negative test result

Collection Time

Please can I ask that once your child has been dismissed by their class teacher that they remain next to the adult who is collecting them. Often, children have been dismissed but are then running around the playground/MUGGA or coming back to the line to chat to their friends or their teacher.

Thank you
Mr Appleby

