



Easington Church of England Primary School

Newsletter Friday 7th January 2022

May we give them the roots to grow and the wings to fly



Dates for your diary :
To follow next week.



Attendance week commencing 3rd January 2022

Ms. Lilley's Class – ELM	99.1
Miss Defty's Class – OAK	93.1
Miss O'Neil's Class – MAPLE	96.7
Mr. Churchill's Class– SYCAMORE	100
Mrs. Appleby's Class - WILLOW	100

Star Pupils Friday 7th January 2022

Ms. Lilley's Class – ELM	Lily E
Miss Defty's Class – OAK	Macy A
Miss O'Neil's Class – MAPLE	Joshua B
Mr. Churchill's Class– SYCAMORE	Aidan A
Mrs. Appleby's Class - WILLOW	Ollie F
Pupils Pupil	Riley B / Orla C

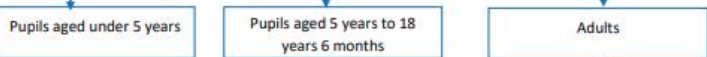
Fundraise & Recycle Ltd – School Connect

You may have noticed our new Clothing Recycle Container outside of our school and read the letter sent home on Thursday this week. We are excited to engage with the project and look forward to our contained filling up ☺ Unwanted clothes, shoes, bags, belts etc can all be dropped into the container. All of the good quality items are re-sold, re-used or recycled helping to lessen the impact of waste on the environment. For each full container the school is paid back up to £60-75 from Fundraise and Recycle.

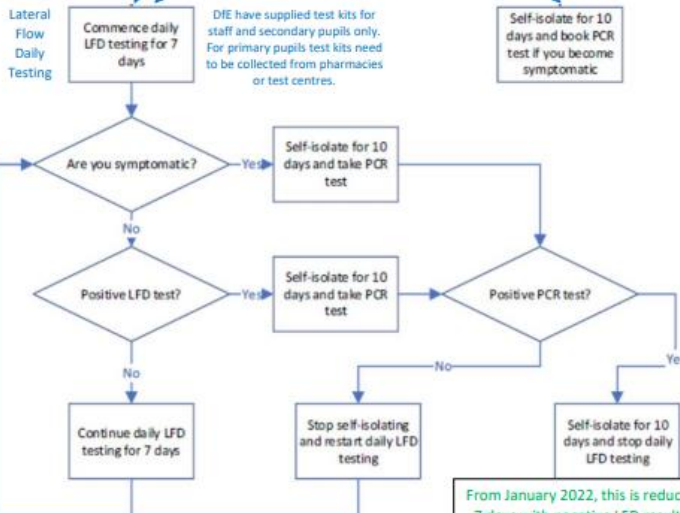
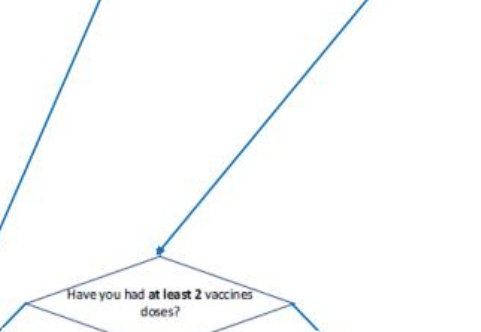


Self-isolation and testing requirements in schools from 04/01/22

Close contact of someone with Covid-19 (Notified by NHS Test & Trace)



Not required to take part in daily testing. Parents/carers should take their child for a PCR test if they have Covid-19 symptoms and the child must stay at home until the test result is received. Isolate for 10 days if the PCR test result is positive (Reduced to 7 days with negative LFD results on days 6 and 7. See below)



From January 2022, this is reduced to 7 days with negative LFD results on days 6 and 7. See below.

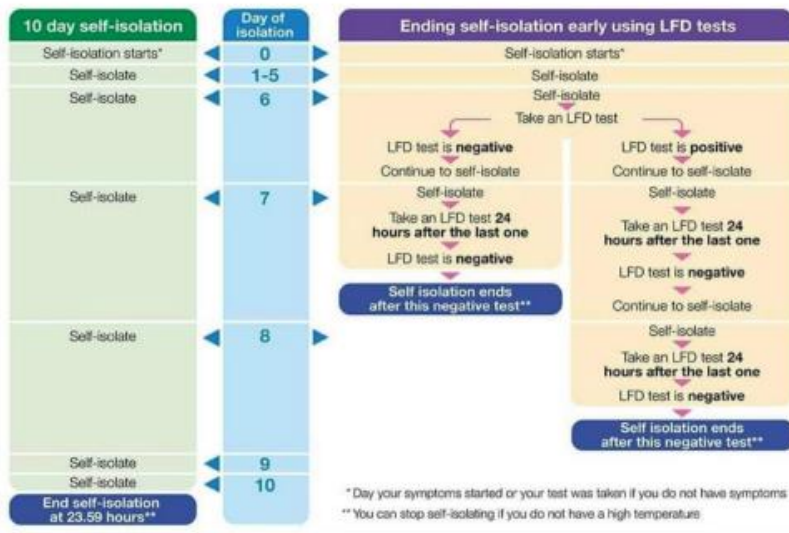
Ending self-isolation early using LFD tests

UK Health Security Agency

New 7 day self-isolation rules

The self-isolation period for people who have tested positive for COVID-19 has been reduced in most cases

1. If you test positive for COVID-19 you must self-isolate for up to 10 days
2. Take an LFD on day 6 of your isolation and another 24 hours later on day 7
3. If both tests are negative and you have no symptoms, you may end your self-isolation after the second negative test result





Easington Church of England Primary School

Newsletter Friday 7th January 2022



May we give them the roots to grow and the wings to fly



May we give them the roots to grow and the wings to fly

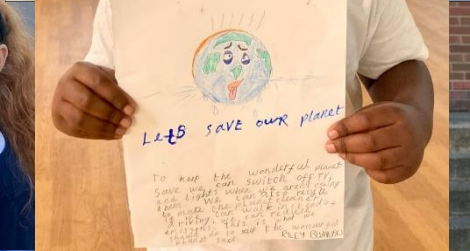
Autumn Term 2
Mr Appleby's Homework Project

Each half term I will be setting an optional Homework Project for the children in school. The homework will be based on different themes throughout the year.

Children can work on their project over the half term and throughout the relevant school holiday. On the first Tuesday or Wednesday back, children can bring their projects into school and present them to parents and children at our 'Homework Open Afternoon'. This half term is on a topic that is both topical and very concerning for everyone.

Climate change is happening NOW. It is everyone's responsibility to stop it!

What can we do to help protect our wonderful



How can we reduce our clothes waste? | Tips

<ul style="list-style-type: none"> Vinted Esty e Bay Instagram Depop ASOs Marketplace Hardly ever worn 	<ul style="list-style-type: none"> Shop less Check what clothes you have before you buy more Swap clothes with friends donate your clothes repare not worn clothes Buy less clothes and keep longer Buy Second hand clothes
---	--

Save the planet Save our clothes!

