



# Easington Church of England Primary School

Newsletter Friday 15<sup>th</sup> October 2021

*May we give them the roots to grow and the wings to fly*



## Dates for your diary

<b>Wed 20<sup>th</sup> October</b>	Flu Immunisations
<b>Fri 22<sup>nd</sup> October</b>	Non Uniform Day
<b>Fri 22<sup>nd</sup> October</b>	School Closes for half term break
<b>Mon 1<sup>st</sup> November</b>	PD Day for staff, school closed to children
<b>Tue 2<sup>nd</sup> November</b>	Children welcomed back to school
<b>Tues 2<sup>nd</sup> November 3.00pm-4.00pm</b>	Homework Topic question presentation
<b>Thurs 4<sup>th</sup> November 5.30pm-6.15pm</b>	Curriculum Open Night – What does Maths look like at Easington C of E Primary School
<b>Fri 5<sup>th</sup> November 8.55am – 9.30am</b>	Family Friday
<b>Wed 10<sup>th</sup> November 9.05am- 9.25am</b>	Year 5 Collective Worship for parents
<b>Mon 15<sup>th</sup> and Tues 16<sup>th</sup> November 3.30pm-6.00pm</b>	Parental Consultation Meetings
<b>Fri 26<sup>th</sup> November</b>	School Photographs (individual and siblings)
<b>Fri 3<sup>rd</sup> December 8.55am-9.30am</b>	Family Friday
<b>Christmas Event Timetable to follow after half term.</b>	

## PD Day - Monday 1<sup>st</sup> November

Please remember school will be closed on Monday 1<sup>st</sup> November (the first day back after the half term holidays) for a PD day for staff. Children return to school Tuesday 2<sup>nd</sup> November. Before/After school clubs will be available as always. Thank you

## School Football Team

Our promising start to the season continued last night at Wheatley Hill. Our superb defence were at their best again as we did not concede one goal in the three games. The team were fantastic, once again showing teamwork and solidarity. Please see results below:  
Our school 0 - 0 Wheatley Hill school  
Our school 1 - 0 St Godricks school  
Our school 2 – 0 Thornley school  
Well done to everyone involved.



## ParentPay

Please could we ask that Parentpay accounts be brought up to date before the end of this half term. Thank you for your co-operation.

## Attendance week commencing 11<sup>th</sup> October 2021

Ms. Lilley's Class – <b>ELM</b>	97.1
Miss Defty's Class – <b>OAK</b>	89.0
Miss O'Neil's Class – <b>MAPLE</b>	97.4
Mr. Churchill's Class– <b>SYCAMORE</b>	95.6
Mrs. Appleby's Class - <b>WILLOW</b>	92.5

## Star Pupils Friday 15<sup>th</sup> October 2021

Ms. Lilley's Class – <b>ELM</b>	Emily J
Miss Defty's Class – <b>OAK</b>	Sydney-Elizabeth W
Miss O'Neil's Class – <b>MAPLE</b>	Jacob S
Mr. Churchill's Class– <b>SYCAMORE</b>	Ellie P
Mrs. Appleby's Class - <b>WILLOW</b>	Frankie L
Mr Appleby's Special Book	Millie W
Pupils Pupil	Joshua P / Maddie L

## Ms Lilley's Class – Important information

As the work is now finished in the EYFS garden, all children in Ms Lilley's Class are to revert back to the morning routine before the work commenced i.e. Arriving between 8.45 and 8.55am and entering school through the Reception gate.

## Dogs on the school yard

Since starting back in September, staff have noticed an increasing amount of parents/carers who are bringing dogs onto the yard. For health and safety reasons dogs are not allowed on the school yard. Thank you for your co-operation.

## Religious Education

As part of our RE curriculum Miss Swan organised a special visitor to come in to school this week. Sadia, who represents the Muslim Chaplain for Durham University, came to school to talk to our Year 6 children. She commented how wonderful our children were and she really enjoyed her visit to our school. The children had a great afternoon learning about Islam and asking many questions. The previous week, Miss Swan accompanied our Year 5 children to the Synagogue in Newcastle. Again, the children represented our school beautifully and had a fantastic visit learning lots along the way.

## Science Year 5 and 6

Year 5 and 6 - please can you bring a cereal box (the bigger the better) into school next week for Miss Swan's lessons. Children will be using them to make periscopes!  
Thank you

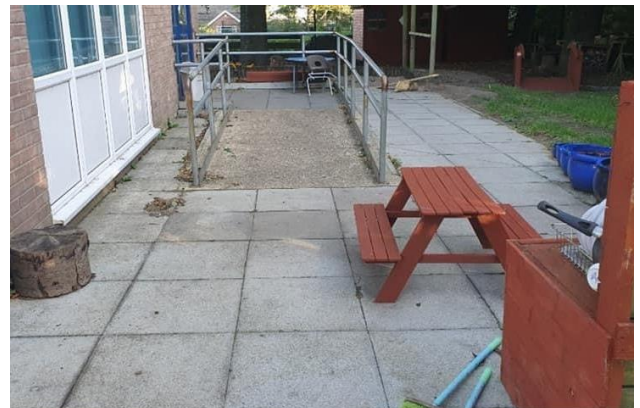
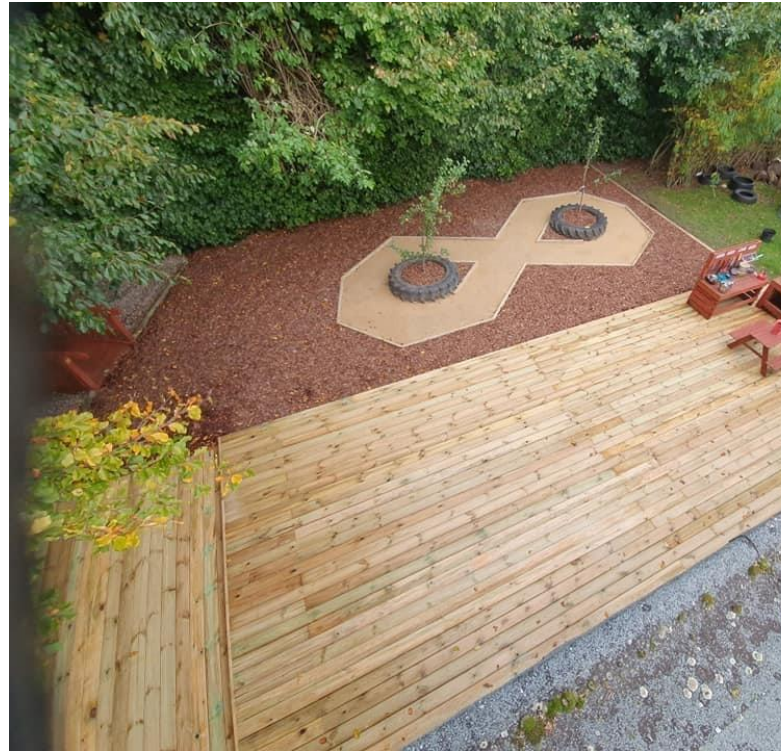
## Before/After School Clubs

The booking forms for the second half of the Autumn Term went home with children today. Please remember to complete the booking form and return to school ASAP. Bookings can be made for the whole term or on a weekly basis. All charges are loaded onto ParentPay every Friday.





## EYFS Garden



We are absolutely delighted with our new and greatly improved outdoor Early Years area. Ms Lilley, Mrs Wray and the children cannot wait to start using it. We are sure you will agree, our children both currently and in the future will benefit from learning in this new outdoor learning environment.

Our already outstanding early years provision has been enhanced even further by this amazing development. Our wonderful children deserve the best and we will always strive to provide them with this, as this project shows ❤️❤️

A huge thank you to BR Gardens Easington for the amazing job. Very professional and friendly and we simply could not recommend Billy and his team highly enough. 🌻





# **WILD ABOUT AUTUMN FAMILY OUTDOOR WORKSHOPS AT THE BARN AT EASINGTON**

**Saturday 23 October 11-1pm-Wild about seeds**

**Sunday 24 October 11-1pm - Wild about fire**

**Friday 29 October 11-1pm- Micro dens**

**Saturday 30 October 11-1pm- Shadow puppets**

**Sunday 31 October 11-1pm Halloween story walk**

**All workshops will include soup and a packed lunch. Please come dressed to be outside in wellies and waterproofs. Please book your free place by email**

**[thebarnateasington@hotmail.com](mailto:thebarnateasington@hotmail.com)**

Places are limited so please book to avoid disappointment



Better for everyone



## **Wild about Autumn**

**Come along and learn more about the natural world and take part in fun artist led workshops**

**Workshops are suitable for 4 to 13 year olds but please come dressed for the winter weather. Social distancing will be adhered to.**

### **THE BARN AT EASINGTON**

Thorpe Lea East,  
Easington Colliery,  
Peterlee SR83UT

07851 934678

[www.thebarnateasington.co.uk](http://www.thebarnateasington.co.uk)



**BE UNIFORMS**  
www.beuniforms.co.uk

**OCTOBER SALE**

**UP TO 60% OFF  
ALL SCHOOL UNIFORM  
IN STORE & ONLINE**

**ENDS  
1<sup>ST</sup> NOV**



info@beuniforms.co.uk | 01361 810304 | Unit 1, Duns Road Ind. Estate, Greenlaw, TD10 6XJ

\*Please note that higher discounts only apply to overstocked items. Minimum of 25% off all schoolwear items online. May exclude some special schoolwear items such as knitwear and ties. Some schools may also be excluded at their specific request.

**Peterlee  
Amateur Swimming  
Club**

Can you Swim 25m or more?  
Are you interested in improving your swimming?  
Peterlee ASC has spaces available for those who  
may be interested



For more information please contact Kelly on  
**07814 705 148**



**are you  
afraid**  
of someone you live with or someone you know?

**we can help**

**If you are being abused, threatened, physically or sexually assaulted by a partner, a former partner, or a family member, there is help available.**

**Refuges**  
We can provide a safe place for you and your children to live while you decide what you want to do next.

**Community Services**  
We can support you in the community, providing practical and emotional support as you decide about your future.

**Children's and Young People Service**  
We can help your children to deal with the effects of witnessing or experiencing abuse.

**Men's Service**  
A specialist team works with perpetrators of abuse who commit to addressing and changing their behaviour.

**we can help just call**  
**03000 20 25 25**  
Same call cost as 01 and 02 numbers and can be called using inclusive/free minutes

or email us on  
info@myharbour.org.uk  
or text 'Harbour', with your message to: 60777

[www.myharbour.org.uk](http://www.myharbour.org.uk)

registered charity number: 1086897

